



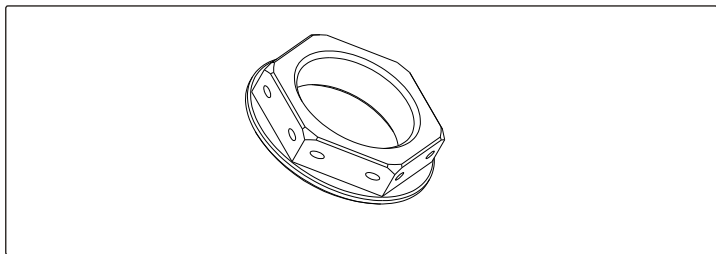
YOSHIMURA

RESEARCH&DEVELOPMENT OF AMERICA, INC.

5420 DANIELS STREET STE A, CHINO CALIF. 91710 · (800)634-9166 · (909)628-4722 · FACSIMILE (909)591-2198

www.yoshimura-rd.com

R-KSSG-K	STEERING STEM NUT KIT
	2010-2012 BMW S1000RR



Instructions:

1. Remove stock steering head nut.
2. Install Yoshimura steering head nut. Torque to 89 lb-ft (120 Nm).

If safety wire is required, loop safety wire through the holed drilled in the nut and secure to stationary location on upper triple clamp.

Note: Installation to be performed by qualified technician only.

NO.	DESCRIPTION	QTY	PART #
1	Stem Nut	1	R-KSSG



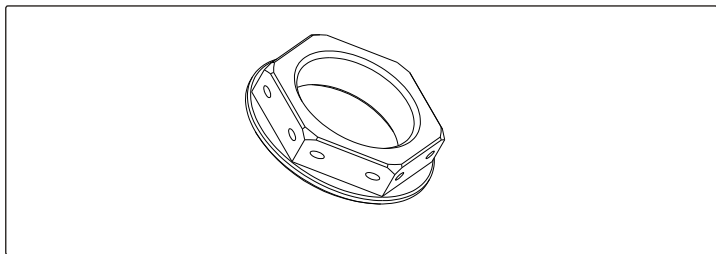
YOSHIMURA

RESEARCH&DEVELOPMENT OF AMERICA, INC.

5420 DANIELS STREET STE A, CHINO CALIF. 91710 · (800)634-9166 · (909)628-4722 · FACSIMILE (909)591-2198

www.yoshimura-rd.com

R-KSSG-K	STEERING STEM NUT KIT
	2010-2012 BMW S1000RR



Instructions:

1. Remove stock steering head nut.
2. Install Yoshimura steering head nut. Torque to 89 lb-ft (120 Nm).

If safety wire is required, loop safety wire through the holed drilled in the nut and secure to stationary location on upper triple clamp.

Note: Installation to be performed by qualified technician only.

NO.	DESCRIPTION	QTY	PART #
1	Stem Nut	1	R-KSSG