



YOSHIMURA

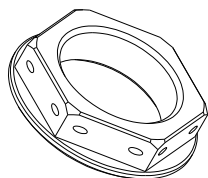
RESEARCH&DEVELOPMENT OF AMERICA, INC.

5420 DANIELS STREET STE A, CHINO CALIF. 91710 · (800)634-9166 · (909)628-4722 · FACSIMILE (909)591-2198

www.yoshimura-rd.com

R-KSSD-K

2007-2013 HONDA CBR600RR STEERING STEM NUT KIT



Instructions:

1. Remove stock steering head nut.
2. Install Yoshimura steering head nut. Torque to 76 lb-ft (103 Nm).

If safety wire is required, loop safety wire through the holed drilled in the nut and secure to stationary location on upper triple clamp.

NOTE: Installation to be performed by qualified technician only.

NO.	DESCRIPTION	QTY	PART #
1	Stem Nut	1	R-KSSD
2	Yoshimura Sticker	2	17020C



YOSHIMURA

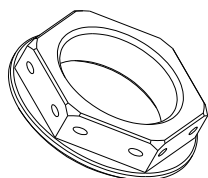
RESEARCH&DEVELOPMENT OF AMERICA, INC.

5420 DANIELS STREET STE A, CHINO CALIF. 91710 · (800)634-9166 · (909)628-4722 · FACSIMILE (909)591-2198

www.yoshimura-rd.com

R-KSSD-K

2007-2013 HONDA CBR600RR STEERING STEM NUT KIT



Instructions:

1. Remove stock steering head nut.
2. Install Yoshimura steering head nut. Torque to 76 lb-ft (103 Nm).

If safety wire is required, loop safety wire through the holed drilled in the nut and secure to stationary location on upper triple clamp.

NOTE: Installation to be performed by qualified technician only.

NO.	DESCRIPTION	QTY	PART #
1	Stem Nut	1	R-KSSD
2	Yoshimura Sticker	2	17020C