



YOSHIMURA
RESEARCH AND DEVELOPMENT OF AMERICA, INC.

YOSHIMURA PIM II

(EMS Peripheral Interface Module)

APPLICATION

YEAR	MODEL
2011-2012	CBR250R

PRODUCT

600XX122500	PIM2 Fuel Injection Controller Kit
-------------	------------------------------------



This product is designed for use in closed course racing and is not intended for highway use.



Read through all instructions before beginning installation.



Areas of vehicle may be extremely hot. Let motorcycle cool down before beginning installation. Always wear hand and eye protection and take precautionary measures to avoid injury or damage.

NOTE:

In the state of California, it is illegal to modify the emission control system, which includes the fuel injection of any vehicle for on- or off-highway vehicles.

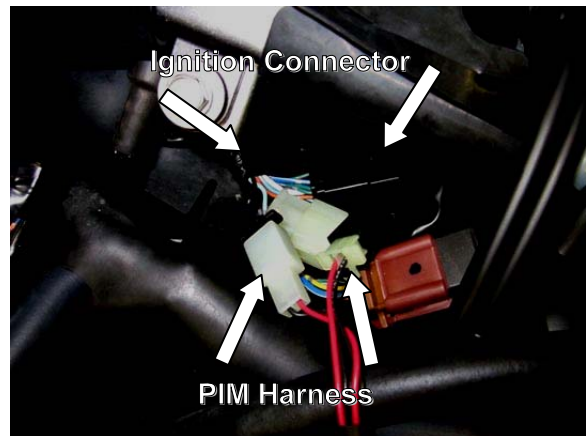
TOOLS REQUIRED

Metric Socket Set

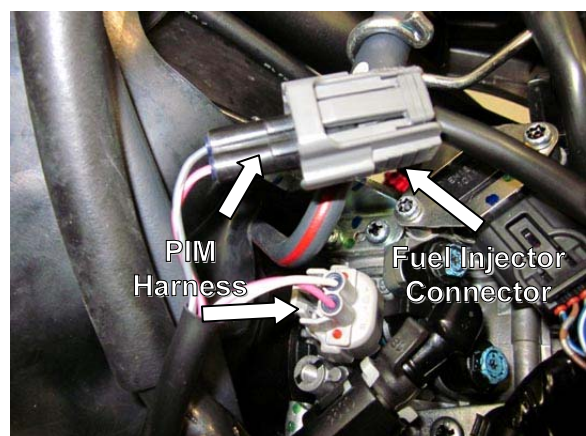
Screwdriver

-INSTALLATION-

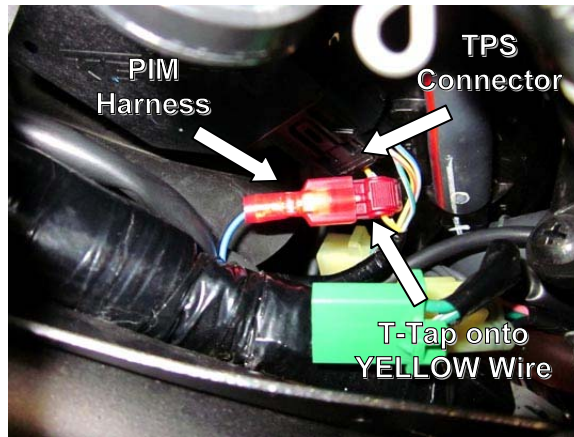
1. Remove seat, fuel tank, and side panels as per factory service or owner's manual.
2. Disconnect and remove the battery.
3. Remove left side air box bolts and slightly lift air box to route PIM harness. Re-install air box bolts.
4. Locate and disconnect ignition connector and connect PIM harness in-line with the stock ignition connectors. The ignition will supply power to the PIM 2 unit.



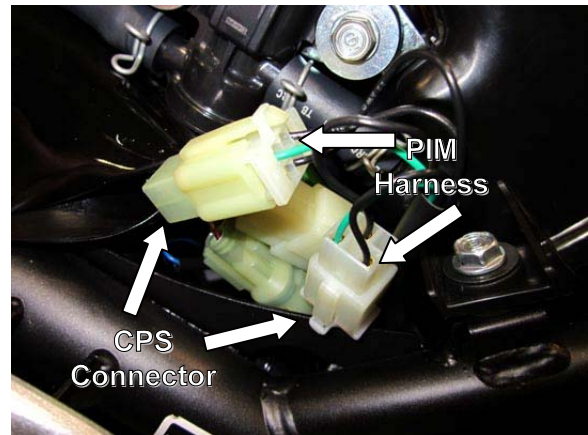
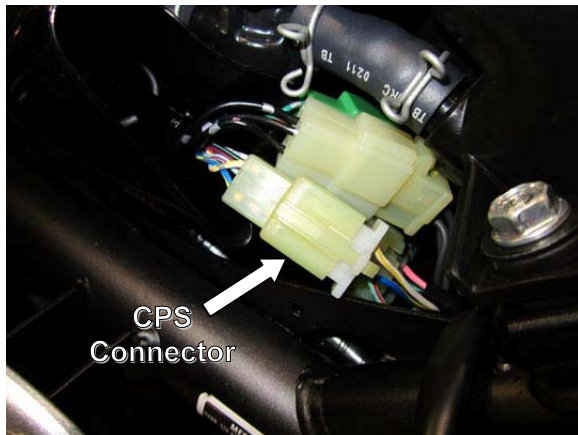
5. Locate and disconnect fuel injector connector. Connect PIM harness in-line with the stock injector connectors.



6. Locate the Throttle Position Sensor (TPS) connector and install the provided T-Tap onto the YELLOW wire on TPS connector. Connect PIM harness to T-Tap.



7. Locate the stock harness rubber boot and pull back to expose connectors. Locate Crank Position Sensor (CPS) connector (3 wire connector - blue/yellow, green/red, yellow/gray) and disconnect. Connect PIM harness in-line with the stock CPS connectors.



8. Connect ground wire.

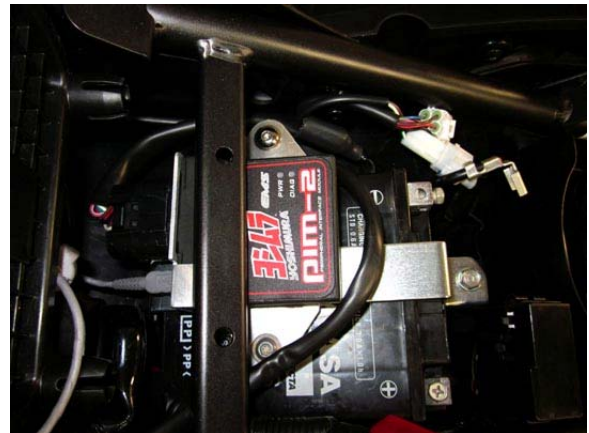
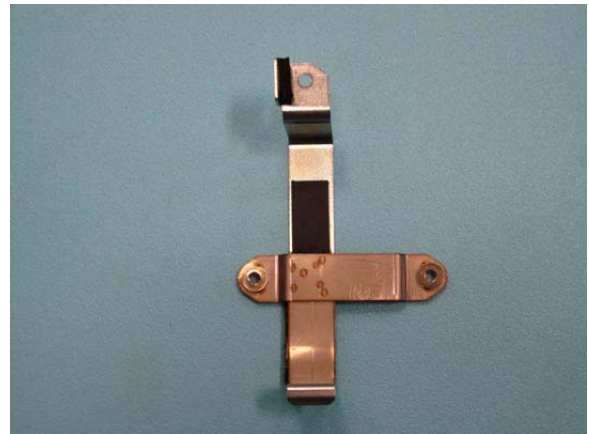
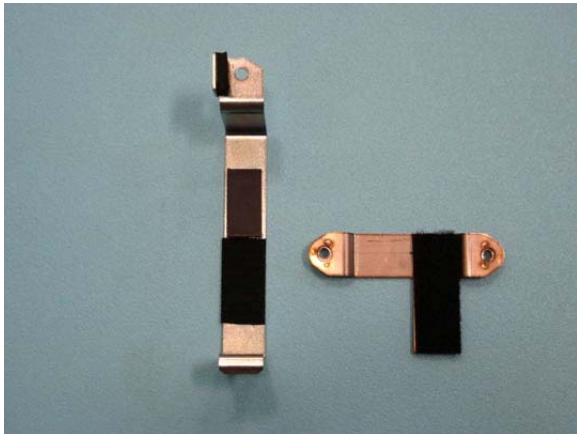


9. *Cut provided Velcro adhesive in half.*

10. *Apply one side of the velcro on the back side bottom of the battery strap.*

11. *Apply the other side of the velcro on the back half of the PIM bracket.*

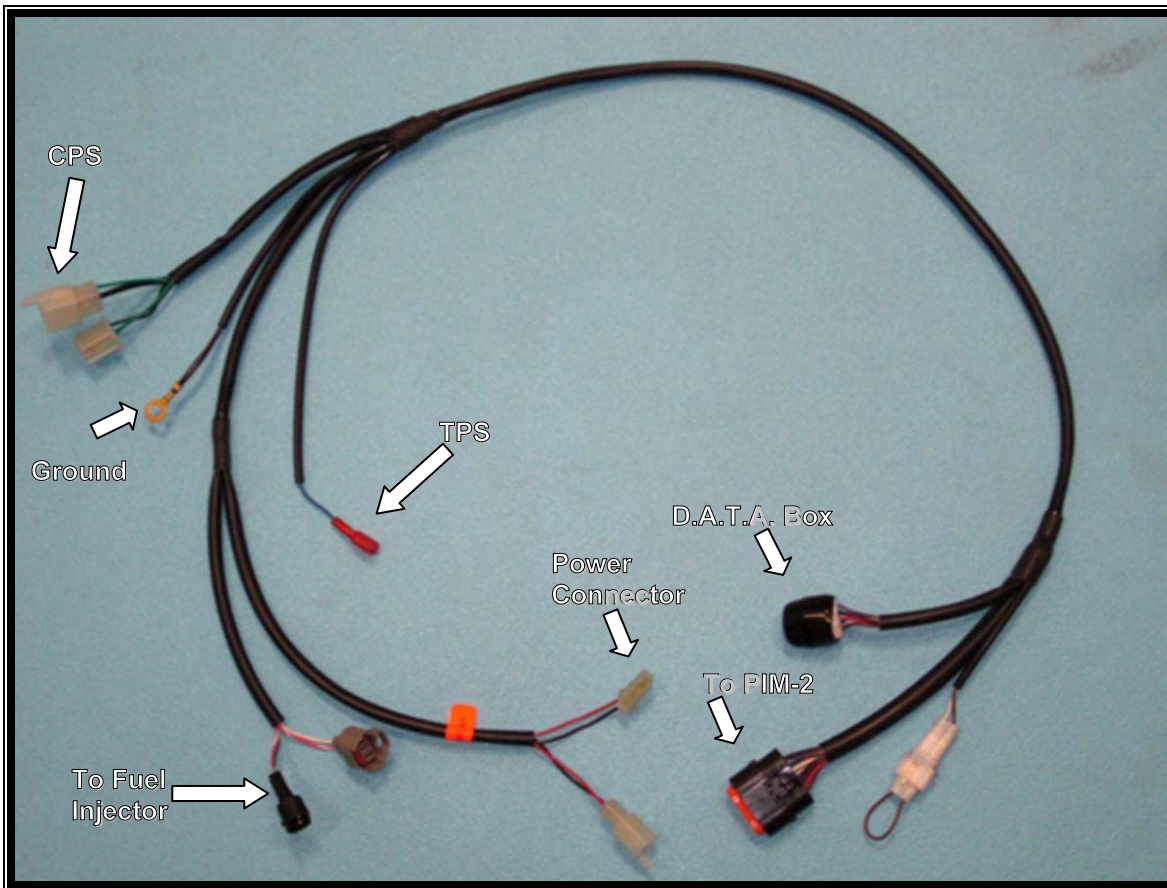
12. *With the back half of the PIM bracket attached to the battery strap, install battery and strap and secure using stock bolt.*



13. *Slide the front half of the PIM bracket with the PIM box up from underneath the frame.*

14. *Align PIM mounting bracket holes and secure using provided hardware.*

15. *Re-connect battery and re-install seat, fuel tank, and side panels as per factory service or owner's manual.*



<i>DESCRIPTION</i>	<i>QTY</i>	<i>PART #</i>
<i>PIM2 Unit</i>	<i>1</i>	<i>R-433B</i>
<i>PIM2 Harness for Honda CBR250R</i>	<i>1</i>	<i>600XX122500HB</i>
<i>PIM2 Bracket for Honda CBR250R</i>	<i>1</i>	<i>600XX122500B</i>
<i>PIM2 Mounting Bracket</i>	<i>1</i>	<i>R-433-2505-BRKT</i>
<i>Installation CD</i>	<i>1</i>	<i>R-433-CD</i>
<i>USB Communication Cable</i>	<i>1</i>	<i>R-433-USB</i>
<i>Zip Ties</i>	<i>4</i>	<i>ZT-300</i>
<i>Hook-and-Loop Adhesive</i>	<i>1</i>	<i>5000-V</i>
<i>"Comp Use Only" Sticker</i>	<i>1</i>	<i>17012</i>
<i>Yoshimura Sticker Sheet</i>	<i>1</i>	<i>17029</i>