



YOSHIMURA

RESEARCH&DEVELOPMENT OF AMERICA, INC.

5420 DANIELS STREET STE A, CHINO CA. 91710 · (800)634-9166 · (909)628-4722 · FACSIMILE (909)591-2198

www.yoshimura-rd.com

R77 PERFORMANCE EXHAUST SYSTEM

2009-2012

YAMAHA

YZF -R1

1314302	STAINLESS STEEL RACE 3/4 SYSTEM W/ CARBON FIBER R77
1314305	STAINLESS STEEL RACE 3/4 SYSTEM W/ STAINLESS R77
1314306	STAINLESS STEEL R77 RACE 3/4 SYSTEM W/ SS SLEEVE & TIP
1314307	STAINLESS STEEL RACE 3/4 SYSTEM W/ TITANIUM R77



THIS PRODUCT IS DESIGNED FOR USE IN CLOSED COURSE RACING AND IS NOT INTENDED FOR HIGHWAY USE.



NOTE: IN THE STATE OF CALIFORNIA, IT IS ILLEGAL TO MODIFY THE EMISSION CONTROL SYSTEM. WHICH INCLUDES THE FUEL INJECTION OF ANY VEHICLE.

Caution: Exhaust system can be extremely hot. Let motorcycle cool down before beginning installation. Always wear hand and eye protection and take precautionary measures to avoid injury.

Note: Read through all instructions before beginning installation.

Tools Needed:

10mm and 12mm Sockets	Torque Wrench
3/8" Ratchet and Extension	3/16" Drill Bit
3mm and 4mm Allen Wrench	Electric Drill
#2 Phillips Screwdriver	Safety Glasses

Installation Steps:

1. Remove passenger seat.
2. Remove driver seat.
3. Remove upper portion of rear tail. (See Fig. 1 & 2)
 - Remove 2 front plastic screw type rivets. (Fig. 1)
 - Remove bolt. (Fig. 1)
 - Remove push type rivet. (Fig. 2)
 - Remove passenger seat lock cable.
 - Remove tailpiece.
4. Loosen tailpipe clamps. (Fig. 3)
5. Remove left and right muffler heatshields. (Fig. 4)
6. Remove left muffler mount bolt then remove muffler. Repeat for right muffler. (Fig. 5)

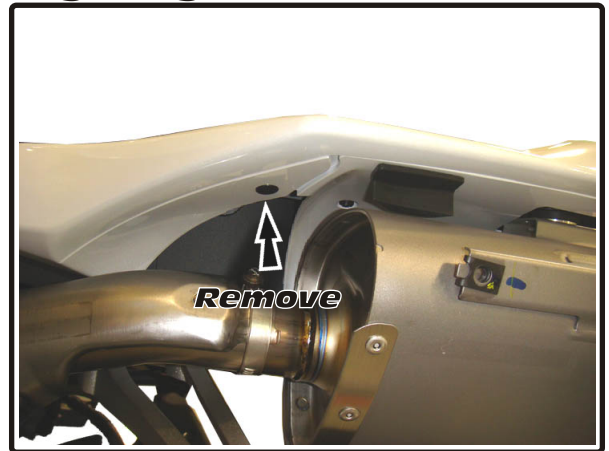


Fig. 2

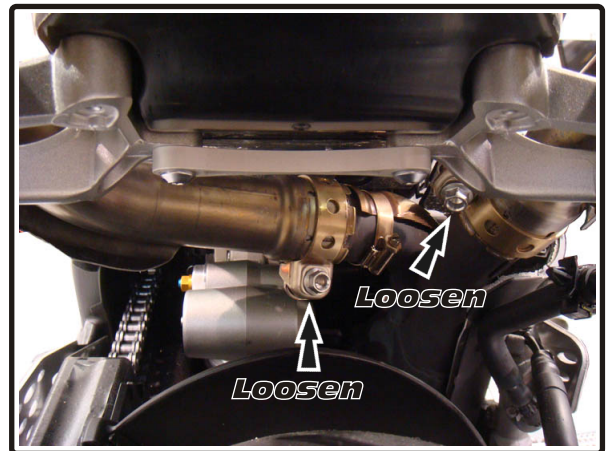


Fig. 3

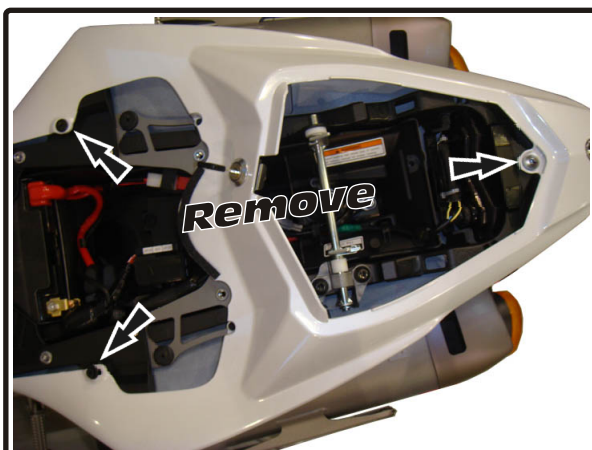


Fig. 1

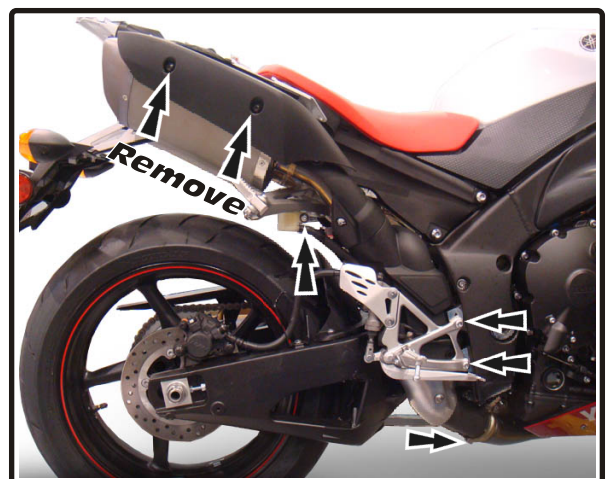
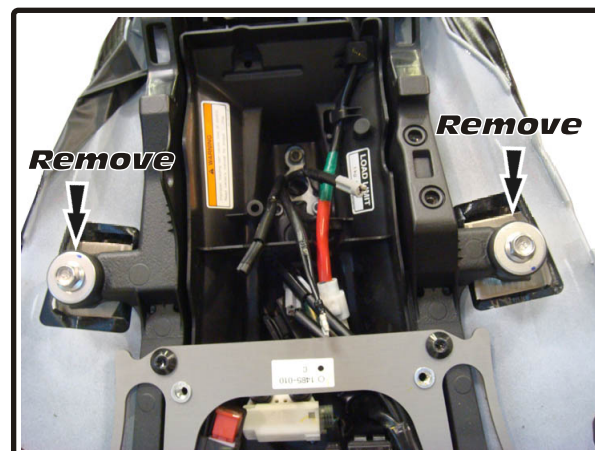
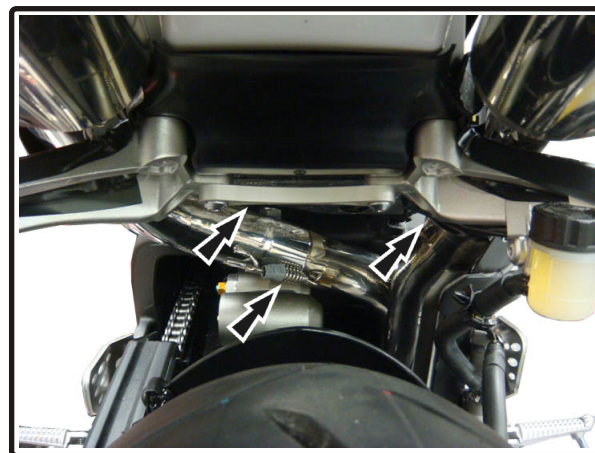


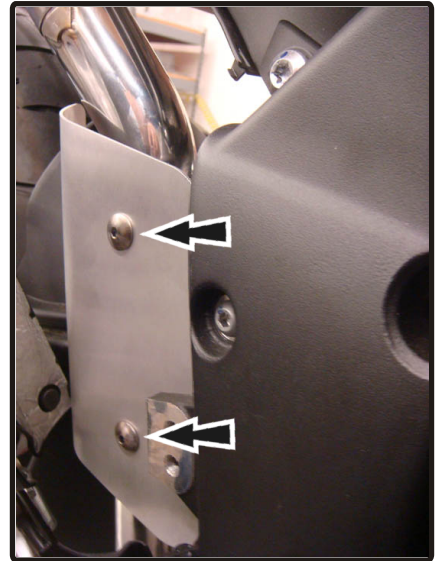
Fig. 4

7. Remove O2 sensor from stock midpipe.
8. Remove rear brake reservoir bolt.
9. Remove right rearset to allow clearance for midpipe removal. (Note: To protect swingarm finish, before removing rearset, tape manila folder (or similar) to swingarm with a mild adhesive tape.)
10. Loosen midpipe collector clamp.
11. Remove chassis mount bolt and remove midpipe.
12. Remove the midpipe mounting bracket and install onto Yoshimura midpipe using stock hardware. (Note: Leave bolt loose to enable you to align the bracket with the chassis mounting point.)
13. Insert supplied collector clamp onto Yoshimura midpipe and install onto stock header. (Note: Yoshimura system does not use stock tailpipe gasket.)
14. Once the bracket mounting position is found torque the bracket to the midpipe to 12 lb-ft (1.65 kg-m).
15. Bolt midpipe to chassis mount using stock bolt. Do not torque at this time.
16. Install stock O2 sensor into Yoshimura O2 sensor bung.
17. Install left Yoshimura muffler assembly. Using stock bolt, tighten hand-tight. (Fig. 6)
18. Repeat steps for right Yoshimura muffler assembly.
19. Install supplied exhaust springs using spring puller tool. (Fig. 6)
20. Install left and right Yoshimura heatshields using supplied bolts. (Fig. 8)
21. Stand to the rear of the motorcycle and adjust mufflers, tailpipes, and/or midpipe to achieve desired fit, while checking all clearances.
22. Torque collector clamp to 16.5 lb-ft (2.3 kg-m)
23. Torque midpipe mounting bolt to 16.5 lb-ft (2.3 kg-m)

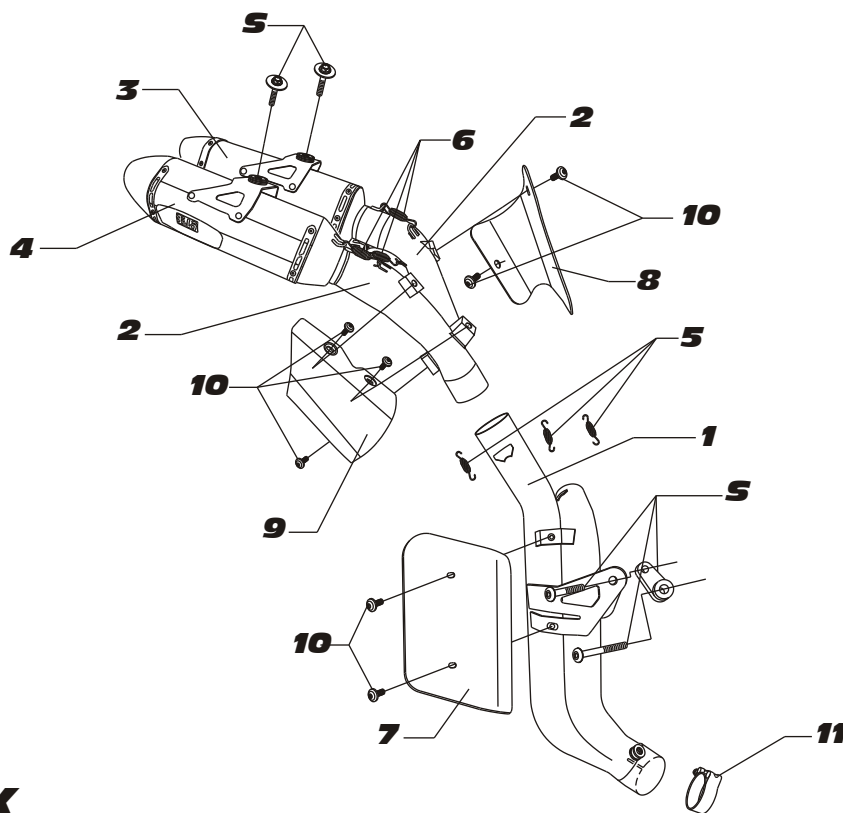
**Fig. 5****Fig. 6**

24. Torque muffler mounting bolts to 16.5 lb-ft (2.3 kg-m)
25. Install Yoshimura midpipe heatshield using supplied bolts. (Fig. 7)
26. Reinstall right rearset, plastic heatshield and rear brake reservoir.
27. Install tail fairing and seats using the reverse steps of removal.
28. It is recommended that the entire exhaust system be wiped down with rubbing alcohol to remove oil and fingerprints. This will help prevent tarnishing of the finish after the exhaust is heated up.
29. Before starting motorcycle, check for proper clearance between new exhaust system and motorcycle (i.e. Bodywork, swing-arm, etc.). If any problem is found, please carefully follow through the installation steps again. If problem still persists, please call Yoshimura tech. dept. at (800)634-9166 / in CA (909)628-4722

NOTE: After starting motorcycle, it is normal for new exhaust system and mufflers to emit smoke until oil residue burns off.

**Fig. 7****Fig. 8**

#131430(2,5,6,7)



S=STOCK

Parts Diagram

NO.	DESCRIPTION	QTY	PART #
1	Yoshimura Mid Pipe	1	1314-410
2	Yoshimura Tail Pipe		
	Stainless Steel (Left Side)	1	1314-418
	Stainless Steel (Right Side)	1	1314-419
3	Muffler (Left)	1	
	R77 Muffler with Carbon Fiber Sleeve		1314202-LMA
	R77 Muffler with Stainless Steel Sleeve		1314205-LMA
	R77 Muffler with SS Sleeve and SS Endcap		1314206-LMA
	R77 Muffler with Titanium Sleeve		1314207-LMA
4	Muffler (Right)	1	
	R77 Muffler with Carbon Fiber Sleeve		1314202-RMA
	R77 Muffler with Stainless Steel Sleeve		1314205-RMA
	R77 Muffler with SS Sleeve and SS Endcap		1314206-RMA
	R77 Muffler with Titanium Sleeve		1314207-RMA
5	Small Exhaust Spring	3	RACE-SPX-1
6	Medium Exhaust Spring	4	RACE-SPS-1
7	Mid Pipe Heatshield	1	1314-HS-A
8	Left Heatshield	1	1314-HSL
9	Right Heatshield	1	1314-HSR
10	Heatshield Bolts	7	RC116HSB
11	Collector Clamp	1	20069
**	Low Volume Insert	2	INS-04-K
**	Low Volume Insert for SRR77126W-SS	2	INS-03-K
**	Exhaust Spring Puller	1	ST-200
**	Yoshimura Sticker Kit Sheet	1	17029