



YOSHIMURA

RESEARCH & DEVELOPMENT OF AMERICA, INC.

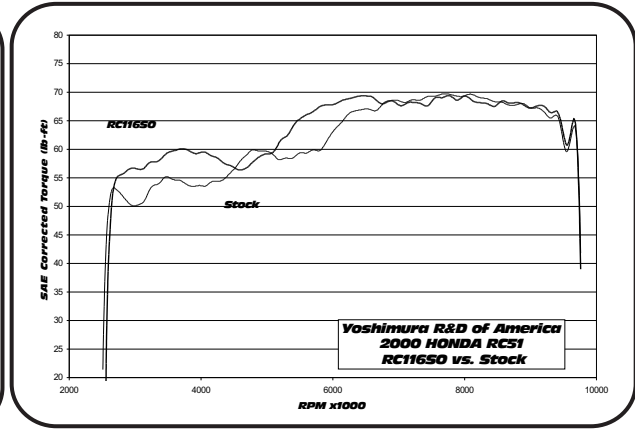
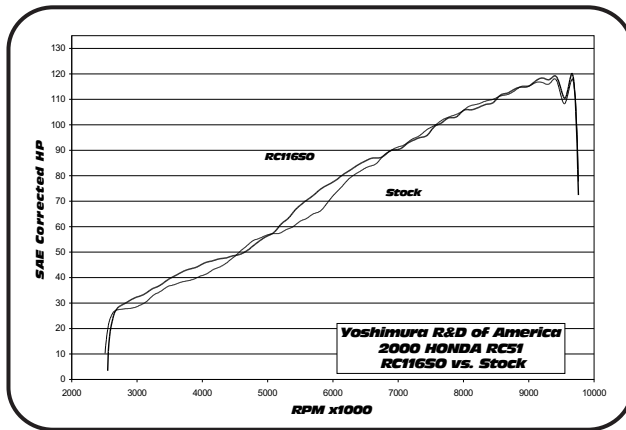
5420 DANIELS STREET STE A, CHINO CA. 91786 · (800)634-9166 · (909)628-4722 · FACSIMILE (909)591-2198

www.yoshimura-rd.com

RS-3 OVAL PERFORMANCE EXHAUST SYSTEM

**HONDA
2002-2006
RC51**

125025(2,5,7) RACE STAINLESS STEEL SLIP-ON SYSTEM



Note: Dyno graphs are for comparison use only. Actual results may vary depending on operating and motorcycle condition.



THIS PRODUCT IS DESIGNED FOR USE IN CLOSED COURSE RACING AND IS NOT INTENDED FOR HIGHWAY USE.



NOTE: IN THE STATE OF CALIFORNIA, IT IS ILLEGAL TO MODIFY THE EMISSION CONTROL SYSTEM, WHICH INCLUDES THE CARBURETORS OF ANY VEHICLE.

Caution: Exhaust system can be extremely hot. Let motorcycle cool down before beginning installation.

Note: Read through all instructions before beginning installation.

Tools Needed:

- 6mm allen socket
- 3/8" ratchet and extension
- 12mm wrench
- Torque wrench

Installation Steps:

- 1 Remove left and right stock mufflers with tailpipes. (See Fig.1)
- 2 Install exhaust clamp onto inlet of Yoshimura slip-on and install onto stock header.
- 3 Mount chassis mount on midpipe to the inside of chassis mount bracket using stock bolt, washer and nut. Do not tighten at this time. (See Fig.2)
- 4 Apply heat insulator to inside of muffler clamp and slide clamp onto muffler. (note orientation of clamp in Fig. 3 & 4)
- 5 Mount muffler clamp to the outside of stock muffler bracket using stock bolt, washer, and nut. (see Fig. 2)
Torque bolt to 2.0 kg-m (16.5 lb-ft)
- 6 Tighten chassis mount and exhaust clamp.
- 7 Before starting, check for proper clearance between new muffler and motorcycle. (i.e. swing-arm, passenger foot-peg, rear wheel, etc.) If any problem is found, please carefully follow through the installation steps again. If problem still persists, please call Yoshimura technical department at (800)634-9166 / in California (909)628-4722

Note: After starting motorcycle, it is normal for new exhaust and mufflers to emit smoke until oil residue burns off.

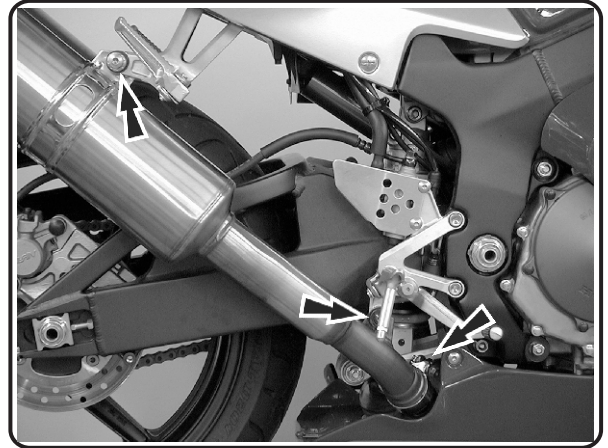


Fig. 1

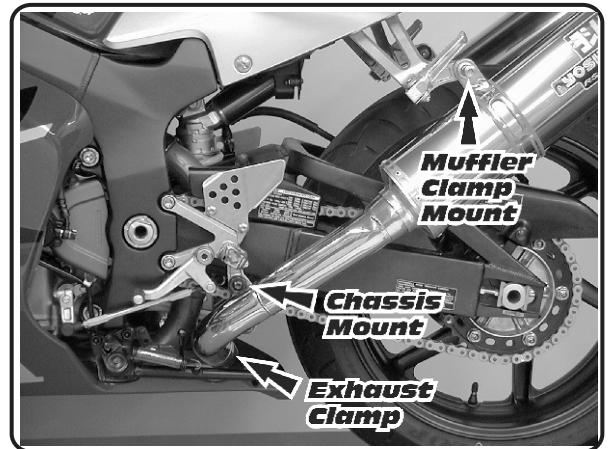


Fig. 2

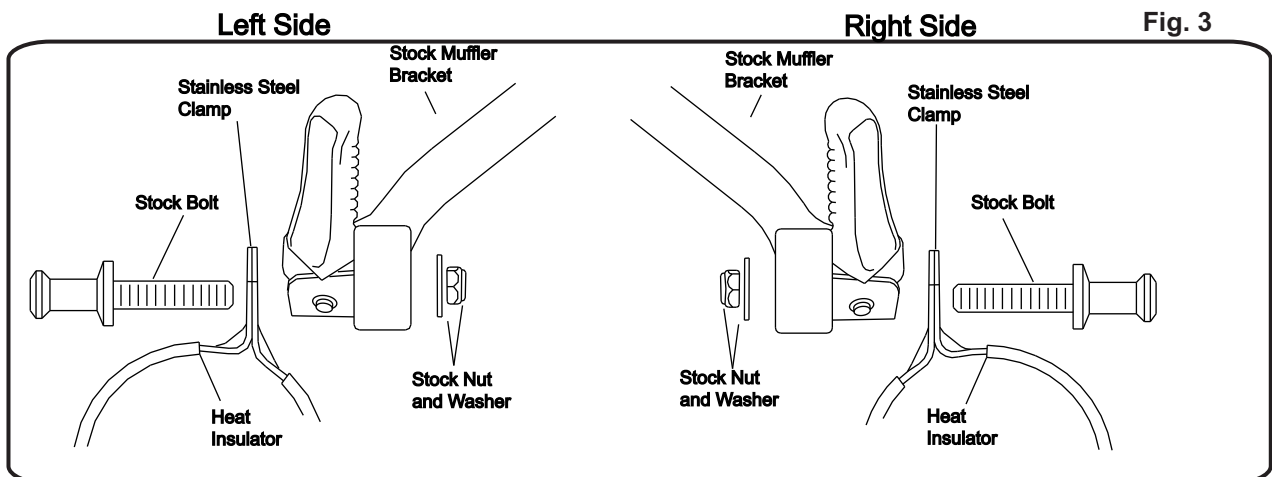
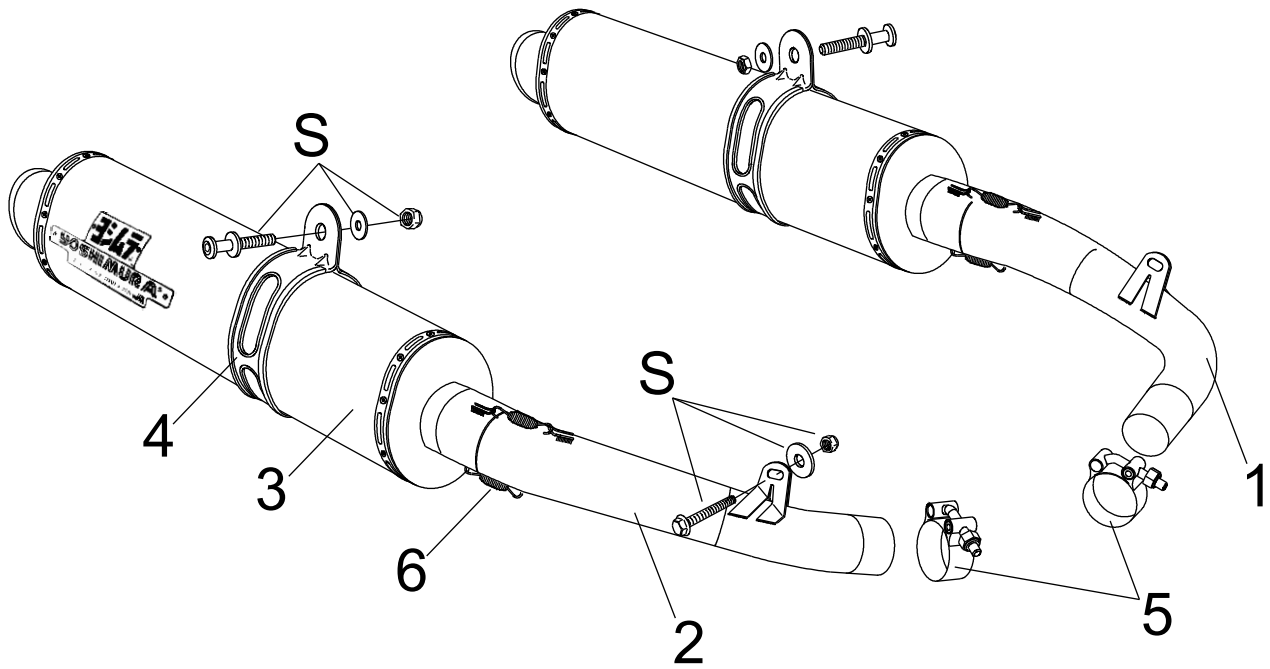


Fig. 3

#125025(2,5,7)



S = STOCK

Parts Diagram

NO.	DESCRIPTION	QTY	PART #
1	Yoshimura Tailpipe (Left Side) Stainless Steel RS-1/RS-3	1	1250-426
2	Yoshimura Tailpipe (Right Side) Stainless Steel RS-1/RS-3	1	1250-427
3	RS-3 Oval Muffer Assembly	2	**
4	Stainless Steel Muffer Clamp Stainless Steel or Titanium Sleeve uses Carbon Fiber Sleeve uses	2	COS450S8ALX COS450S8AL
5	Exhaust Collector Clamp	2	220-59
6	2 1/2" Race Springs	4	RACE-SPS
**	Muffer Clamp Heat Insulator	2	HT SHLDTRS
**	Yoshimura Vinyl Sticker	1	17029