



YOSHIMURA

RESEARCH & DEVELOPMENT OF AMERICA, INC.

5420 DANIELS STREET STE A, CHINO CA., 91710 · (800) 634-9166 · (909) 628-4722 · FAX (909) 591-2198

www.yoshimura-rd.com

Street Series

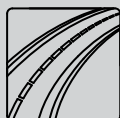
Qualified Manufacturer Declared "Replacement Part"

**2009~2011
SUZUKI GSX-R1000**

1118202 (CF/CF)

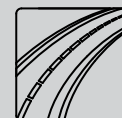
1118205 (SS/CF)

R-77 Stainless Steel Slip-On



All Street Series systems are:

- Slip-on/Bolt-on applications that do not require tampering with the vehicle's emissions control system.
- CARB/EPA tail-pipe emissions compliant.
- Marked with appropriate EPA noise labels.
- Not tested for EPA new vehicle noise compliance.



✘ You must know how to remove and replace your stock exhaust in order to install this product otherwise have it installed by a professional mechanic. Keep all stock parts from your existing system as some components may be necessary to install your new Yoshimura exhaust depending on the application. Read through all instructions before beginning installation. Exhaust system can be extremely hot. Let motorcycle cool down before beginning installation. Always wear hand and eye protection and take precautionary measures to avoid injury. ✘

NOTE: IN THE STATE OF CALIFORNIA, IT IS ILLEGAL TO MODIFY THE EMISSION CONTROL SYSTEM, WHICH INCLUDES THE CARBURETORS OF ANY VEHICLE.

Caution: Exhaust system can be extremely hot. Let motorcycle cool down before beginning installation. Always wear hand and eye protection and take precautionary measures to avoid injury.

Note: Read through all instructions before beginning installation.

Tools Needed:

Metric Socket Set
3/8" ratchet and extension
Combination Wrench Set
Power Drill
13/64" Drill Bit
Torque wrench
Metric Allen Wrench Set

Installation Steps:

- 1 Remove stock right side tailpipe heatshield. At this time, remove the stock spacer out of the heatshield right rearset mount rubber grommet. (See Fig. 1)
- 2 Loosen left and right stock collector clamps (see Fig. 2 and 3).
- 3 Unbolt and remove left and right stock mufflers from passenger foot rest mounts. Remove the stock tailpipe exhaust gaskets.

NOTE: The stock exhaust gaskets that were used between the stock underbelly muffler and the stock tailpipes will not be used with the Yoshimura slip-on system. The Yoshimura tailpipes are designed to be installed with no gaskets.

- 4 Slip supplied collector clamps over inlets of Yoshimura tailpipes.
- 5 Install rubber heat insulator to inside of muffler clamps.
- 6 Slide the Yoshimura muffler clamps over the Yoshimura mufflers.
- 7 Slip left and right Yoshimura mufflers and tailpipes onto the stock underbelly muffler.
- 8 Mount Yoshimura muffler clamps to the inside of the stock muffler brackets using stock bolts, washers, and nuts (see Fig. 4 and 5).

NOTE: Hand tighten only at this point.

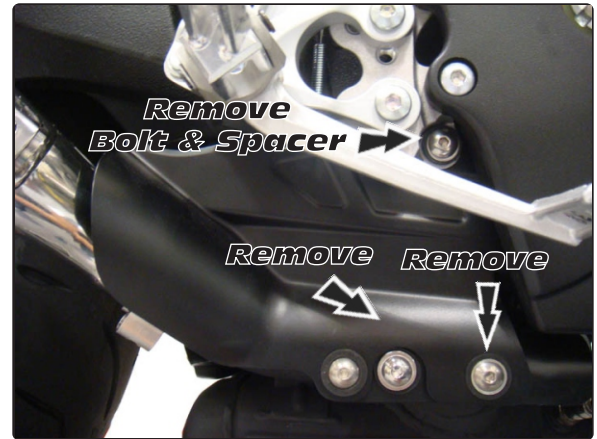


Fig. 1



Fig. 2



Fig. 3

- 9 Standing at the back of the motorcycle, check for proper alignment of the mufflers. Adjust if necessary.

NOTE: To adjust fitment, it may be necessary to rotate the tailpipe or the muffler independently until proper alignment of the mufflers is achieved.

NOTE: We will be installing a securing rivet in each tailpipe to prevent the tailpipes from rotating while the motorcycle is in operation.

- 10 Drill a 13/64" hole thru the outlets of the stock underbelly muffler, using the securing holes located near the Yoshimura tailpipe inlets as your guides (see Fig. 6).

CAUTION: Always wear eye protection when using any power tools.

- 11 Insert securing rivet into drilled hole, slide supplied stainless steel collector clamp over rivet and torque clamp to 1.25 kg-m (9 lb-ft).
- 12 Torque muffler clamp bolts to 2.5 kg-m (18 lb-ft).
- 13 Torque supplied collector clamps to 1.25 kg-m (9 lb-ft).
- 14 Install stock heatshield onto right Yoshimura tailpipe using the stock hardware and install Yoshimura heatshields onto left and right Yoshimura tailpipes using the supplied hardware (see Parts Diagram on page 4).
- 15 It is recommended that the muffler and tailpipe be wiped down with rubbing alcohol to remove oil and fingerprints. This will help prevent tarnishing of the finish after the exhaust is heated up.
- 16 Check for proper clearance between new exhaust system and motorcycle (i.e. swing-arm, body work, etc.). If any problem is found, please carefully follow through the installation steps again. If problem still persists, please call Yoshimura technical department at (800)634-9166 / in CA (909)628-4722.

NOTE: After starting motorcycle, it is normal for a new exhaust system and muffler to smoke until oil residue burns off.

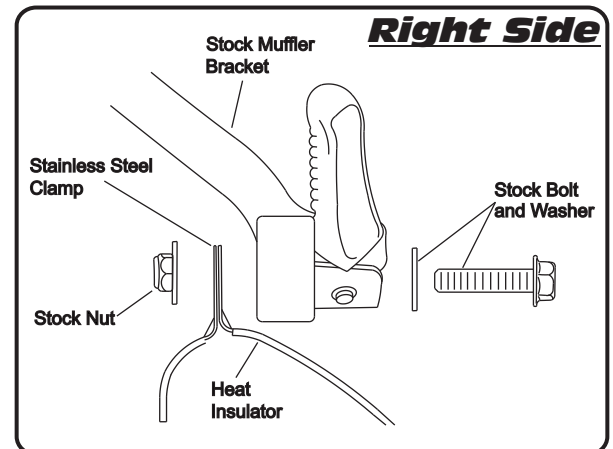


Fig. 4

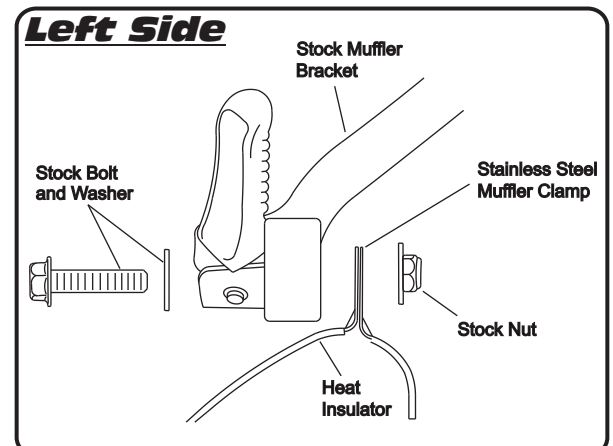
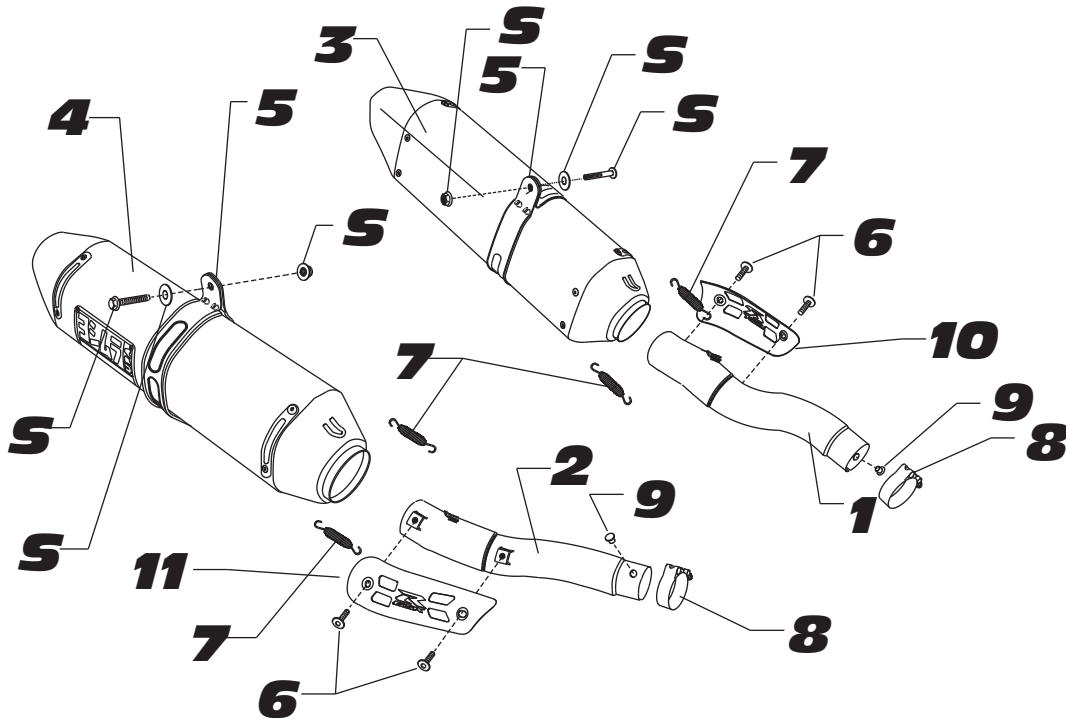


Fig. 5



Fig. 6

#111820(2,5,6,7)



S = STOCK

Parts Diagram

NO.	DESCRIPTION	QTY	PART #
1	Yoshimura Race Slip-On Tailpipe (Left)	1	1118-426
2	Yoshimura Race Slip-On Tailpipe (Right)	1	1118-427
3	R77 Muffler Assembly (Left) with Carbon Fiber Sleeve with Stainless Steel Sleeve with SS Sleeve and SS Endcap with Titanium Sleeve	1	CRR77126WL SRR77126WL SRR77126WL-SS TRR77126WL
4	R77 Muffler Assembly (Right) with Carbon Fiber Sleeve with Stainless Steel Sleeve with SS Sleeve and SS Endcap with Titanium Sleeve	1	CRR77126W SRR77126W SRR77126W-SS TRR77126W
5	R77 Stainless Steel Muffer Clamp Carbon Fiber Sleeve uses Stainless Steel or Titanium Sleeve uses	2	1121-MPCR 1121-MPCRX
6	Heatshield Bolt	4	RC116HSB
7	Medium Exhaust Spring	4	RACE-82MM
8	Exhaust Collector Clamp	2	20060
9	Securing Rivet	2	S-RIVET
10	Yoshimura Heatshield (Left)	1	1117-HSL
11	Yoshimura Heatshield (Right)	1	1117-HSR
**	Yoshimura Quiet Insert for 1117206 (Stainless with Stainless Tip)	2	INS-04-K INS-03-K
**	Heat Insulator for Muffer Clamps	2	HT SHLDR77
**	Spring Hook Puller	1	ST-200
**	Yoshimura Vinyl Sticker	1	17029